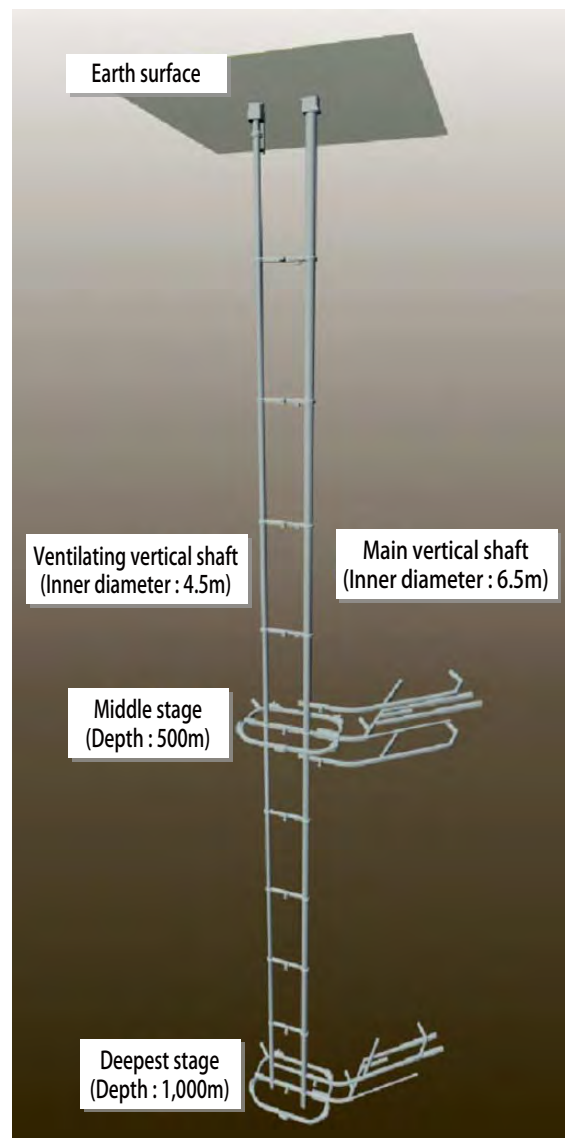


## Shaft for Mizunami Underground Research Laboratory



**Ordering :** Japan Atomic Energy Party Agency

**Location :** Mizunami City, Gifu Prefecture

### **Outline of the facility :**

Japan Atomic Energy Agency, which researches mainly crystalline rocks (granite), is one of the underground research laboratories listed in the Long-Term Program for Research Development and Utilization of Nuclear Energy.

They has been carrying out a geoscientific research with the shaft comprising of horizontal and vertical shafts 1,000m long buried in the ground, and providing information to give the nation a better understanding of geological disposal.