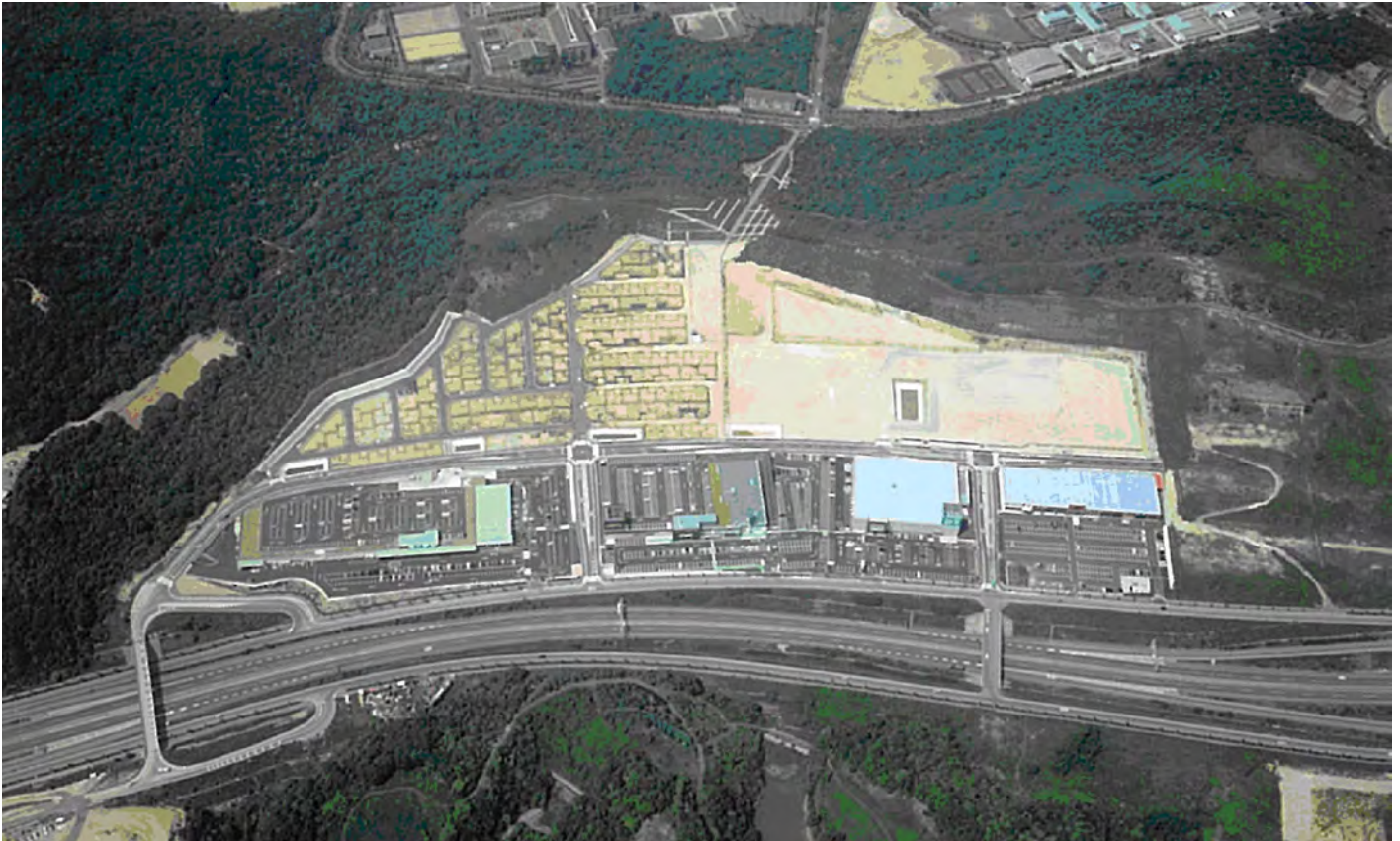


Detailed design for Land reclamation of housing site – Kozukayama Danchi (Tentative name)



Ordering party : Tarumi-ku, Kobe-shi, Hyogo

Development area : 15.3 ha

Services :

- Detailed design
- Various applications and consultations

Land use district : Detached houses, Collective housing, Commercial facilities, Parks, Roads

Related laws : City Planning Act, Act on Regulation of Residential Land Development, Forest Act (Application for cancellation of protection forest), Road Act

Time of design : From April 2003 to March 2005

With the concept – “Suburban attractive town comprising the vitality of the city” , we, Nikken Sekkei Civil Engineering, designed the integrated urban development plan to utilize the following conditions of location; convenient access by car, abundant green environment, and splendid view of Setonaikai and Akashi-Kaikyo Bridge, etc.

At the commercial zone, the following shops and companies were attracted and started business: Kohnan, Autobacs, Nitori and Alpen.