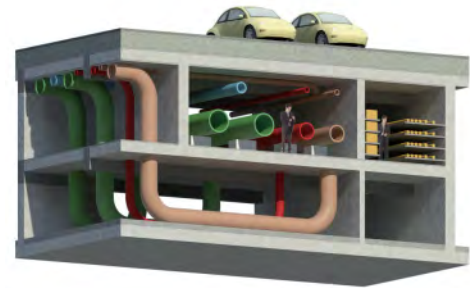
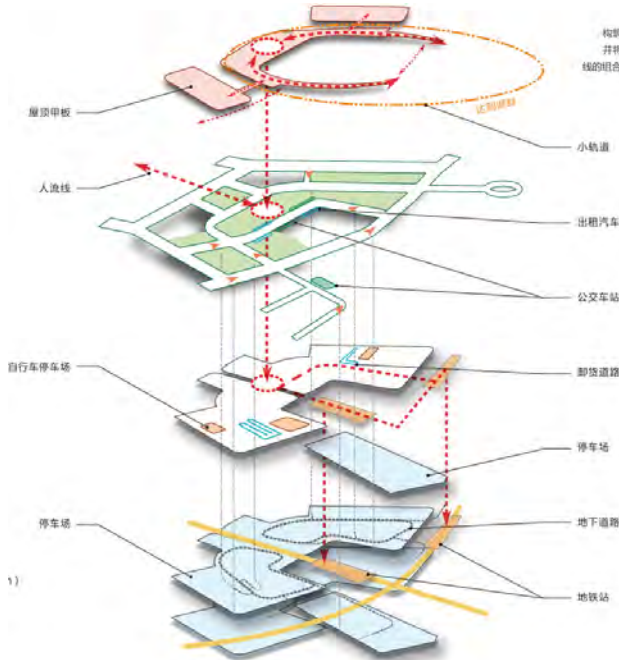
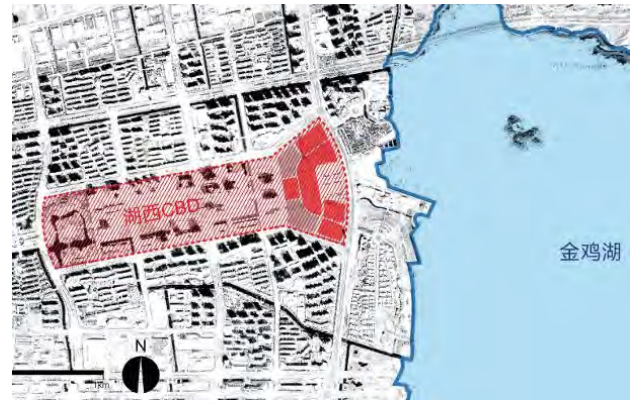
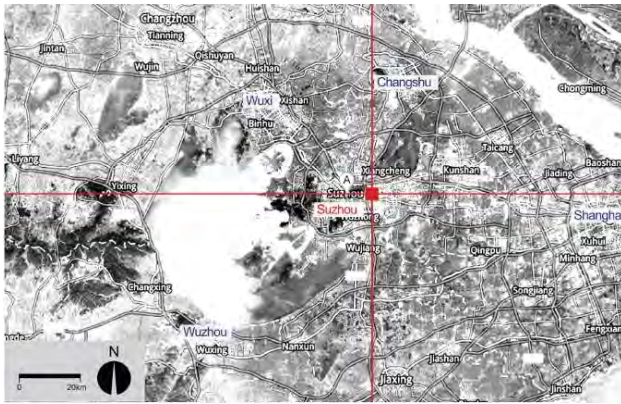


Detailed design for Lake West CBD of Suzhou Industrial Park



Ordering party : Suzhou Industrial Park Jinji Lake Urban Development Company

Location : Suzhou, Jiangsu, China

Facilities : Total development of above & underground facilities (e.g. RC 3 story underground structure)

Project area : Approx. 1,121,100 m²

Service : Detailed planning

Construction : Start in 2013

Suzhou Industrial Park is located in the east of the Suzhou old town and close by Jinji Lake. The site with an area of about 260km² has been jointly developed by Chinese and Singaporean government. The Suzhou underground railway, Line No.1 runs in this area connecting Lingtian street in Gaoxin district and Jinxi town in Suzhou Industrial Park.

The project is comprehensive development of the Xinggang Street Station area to create a new CBD of Suzhou Industrial Park, and NSC conducted a series of the design including guideline control planning, basic design and detailed design.

The project site has nine buildings aboveground and the plan is to build an integrated underground structure by total development including utility tunnels in the 1st basement, and the 2nd basement parking lots has road network that connects all the town blocks. With this structure, cars and pedestrians are separated and pedestrians can walk on the streets aboveground safely and comfortably while cars can travel underground smoothly. Road network, parking lots, and entrances are effectively located based on the careful analysis to avoid the traffic jams and complexity.

At the connecting area to the metro, an open concourse was built and connected to an aboveground atrium, which was achieved by negotiation and arrangement with the railway company conducted from the early stage of the development.