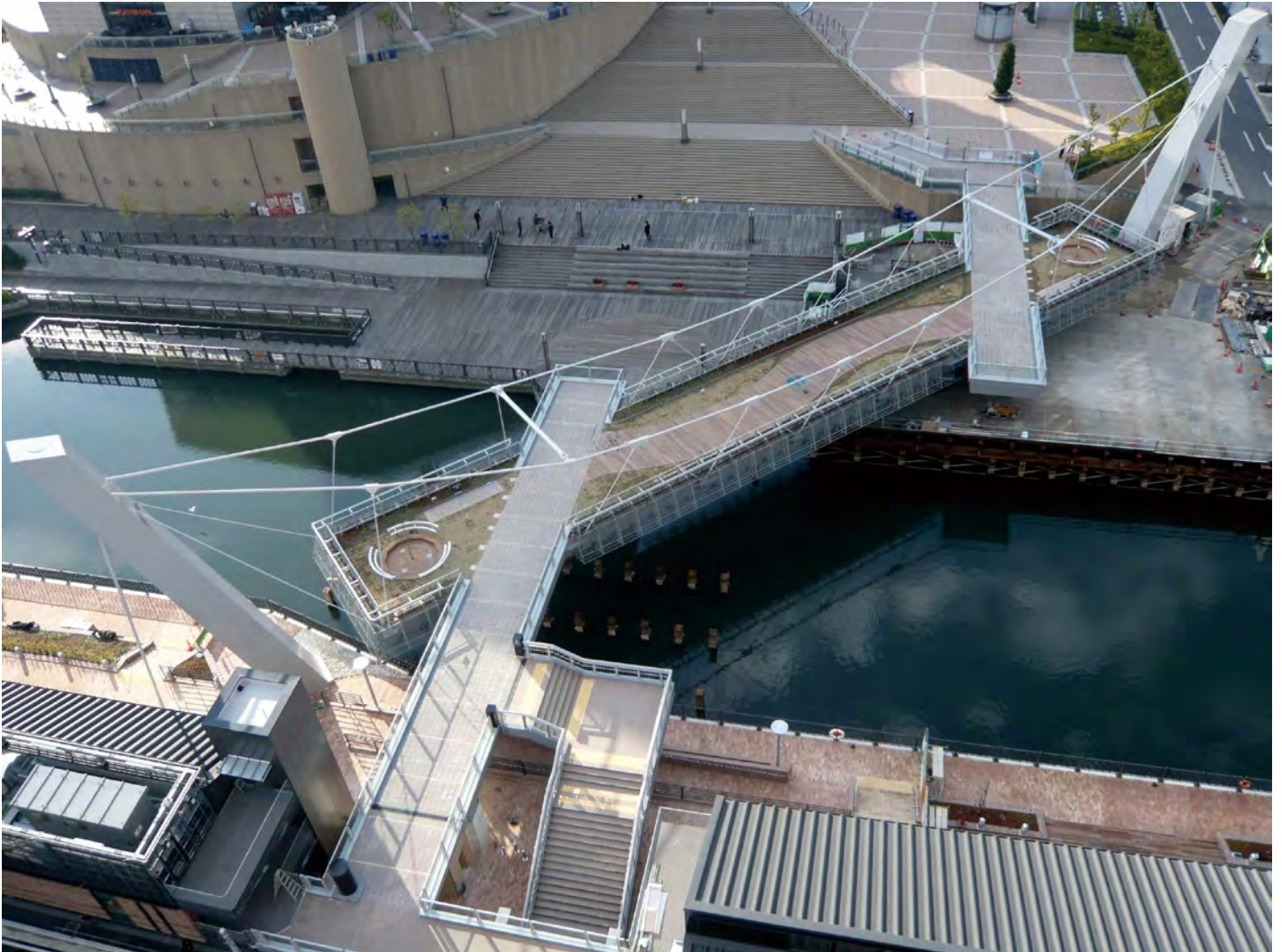


Ukiniwa Bridge (Pedestrian Bridge across the Dotonbori River)



Ordering party : Construction Bureau of Osaka City
Location : 1-chome, Minato-machi, Naniwa-ku,
Osaka city to 1-chome, Minami Horie, Nishi-ku

Project summary : - Bridge type :

- Pedestrian bridge "Ukiniwa Bridge"
- Length : 76.3m
- Width : 4.0m to 6.2m
- Span of main towers : 81.6m (Cable span)
- Bridge structure :
 - Superstructure : Box girder suspension bridge with a steel plate deck
 - Main tower: Steel pillar
 - Foundation : Steel-pipe-sheet-pile well work, Steel pipe pile

Services : Basic and detailed designs
(Joint project with Avant Associate)

Design period : April 2006 to March 2007

Construction period : March 2007 to March 2009



Minamihorie where the pedestrian bridge was built is located near the central Osaka. The old warehouse and furniture stores which were renewed to boutiques and cafes by young creator has been attracting young people.

On the other hand, the area around the Dotonbori River – a river representing Osaka City – was developed. Avant Associate and Nikken Sekkei Civil Engineering joint venture won the design competition held in the year before the bridge construction. The finishing work was conducted by Avant Associate, and the structure-related work by Nikke Sekkei Civil Engineering. Instead of using the bridge cable as the supporting point, the 45-degree sub-decks were adopted as bearing to maintain the safety for earthquake and vibration.